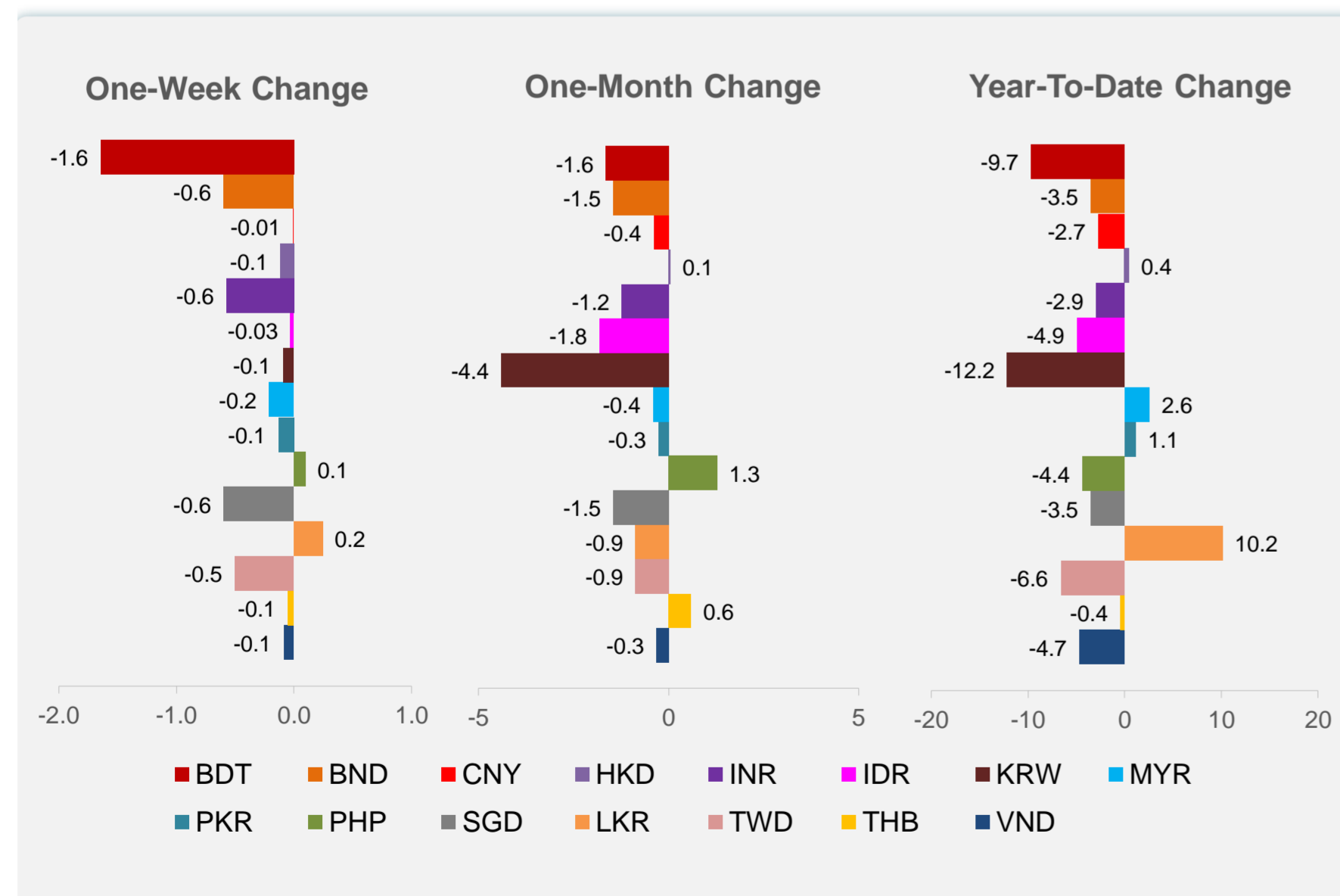
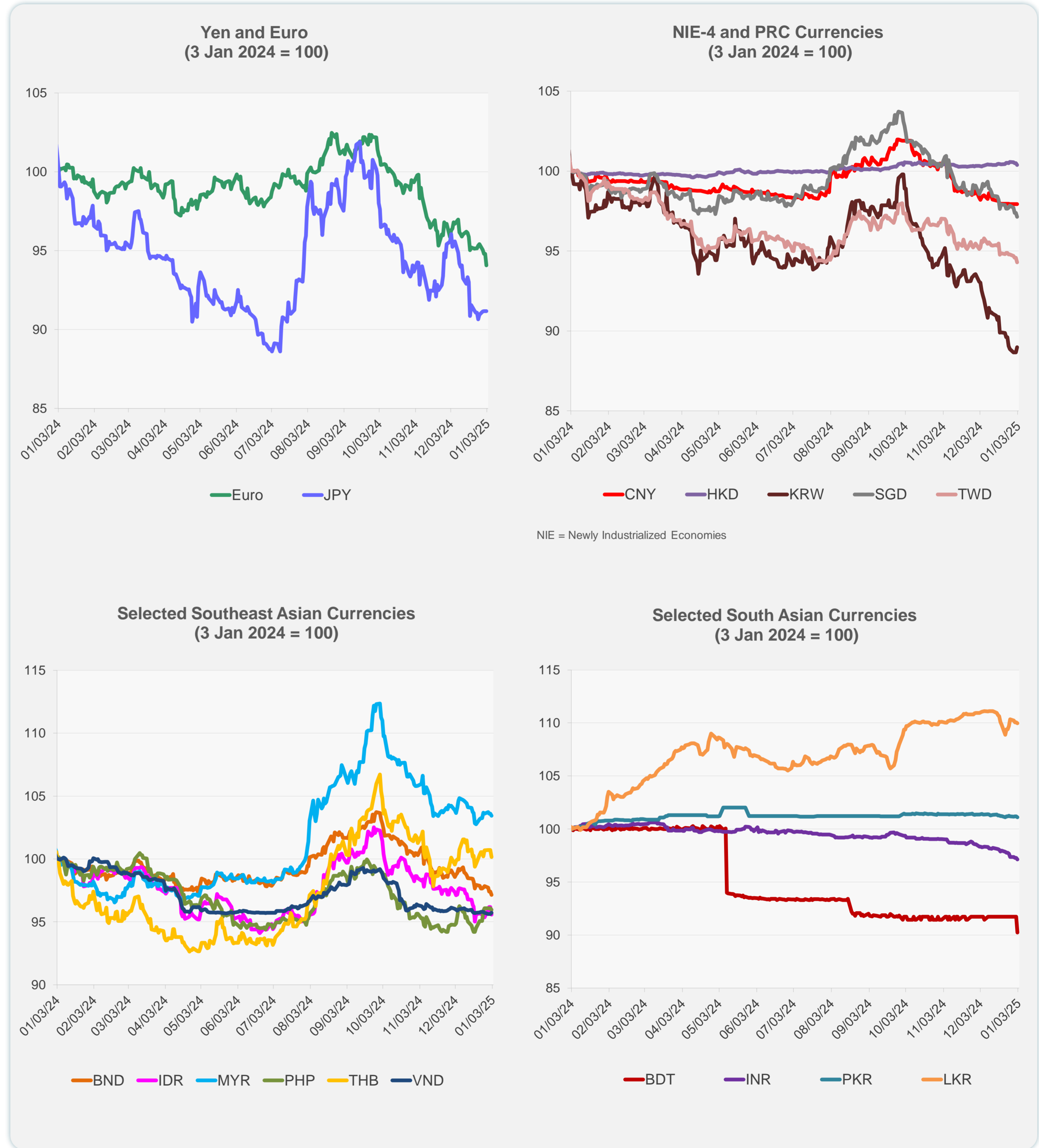
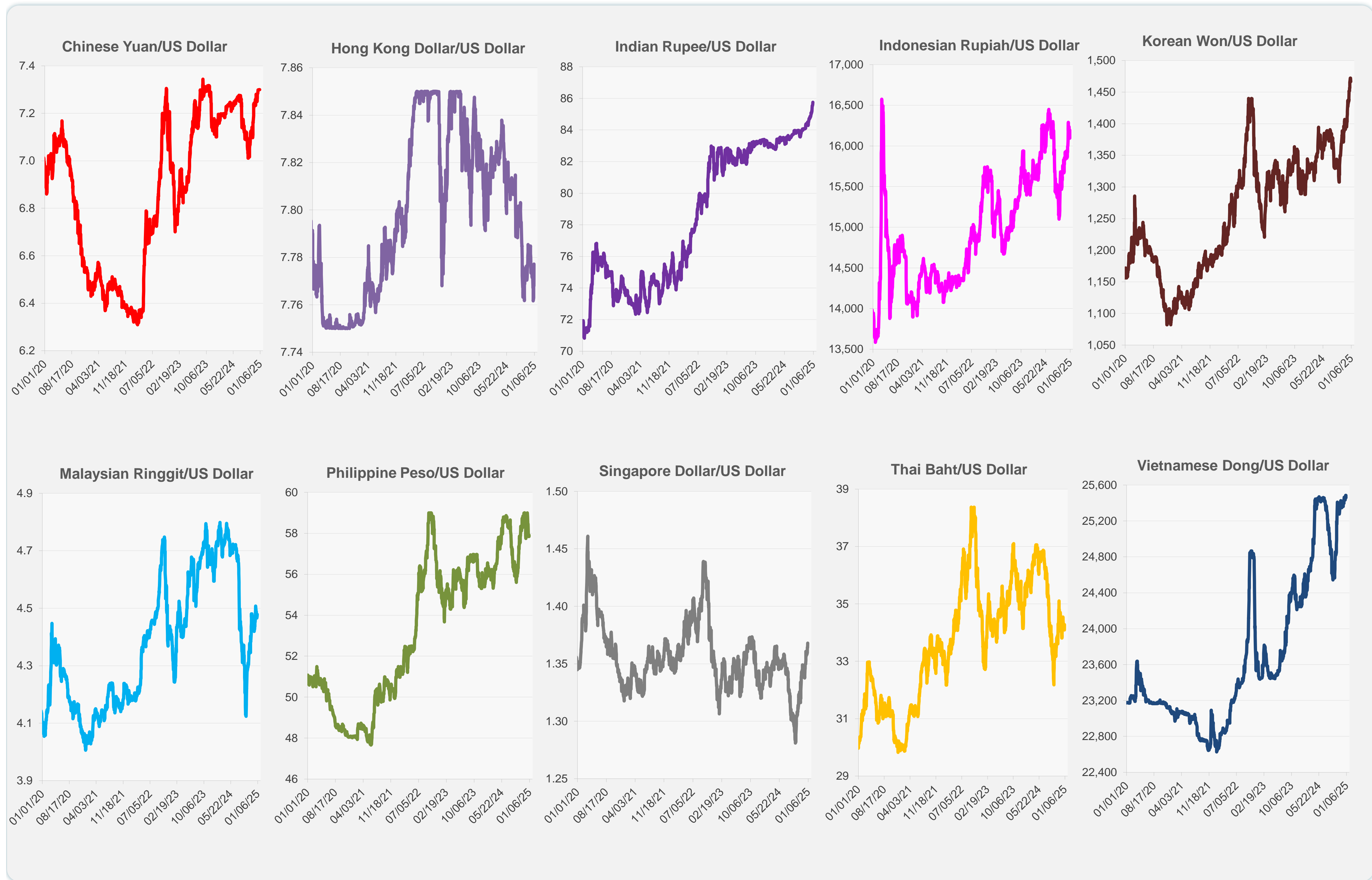


	Latest Closing	% change from Previous Day	% change from 01-Jan-24
Euro	0.97	-0.77	-6.97
Japanese yen (JPY)	157.16	0.00	-10.35
Bangladeshi taka (BDT)	121.50	-1.65	-9.67
Brunei dollar (BND)	1.37	-0.27	-3.48
Chinese yuan (CNY)	7.30	0.00	-2.73
Hong Kong dollar (HKD)	7.78	-0.12	0.44
Indian rupee (INR)	85.76	-0.17	-2.94
Indonesian rupiah (IDR)	16,194.50	-0.61	-4.92
Korean won (KRW)	1,466.65	0.38	-12.17
Malaysian ringgit (MYR)	4.48	-0.16	2.58
Pakistan rupee (PKR)	278.65	-0.10	1.14
Philippine peso (PHP)	57.91	-0.12	-4.36
Singapore dollar (SGD)	1.37	-0.27	-3.48
Sri Lanka rupee (LKR)	293.20	-0.07	10.15
Taipei,China NT dollar (TWD)	32.88	-0.30	-6.61
Thai baht (THB)	34.28	-0.55	-0.42
Vietnamese dong (VND)	25,457.50	0.11	-4.68



Note: Negative/Decreasing values indicate depreciation of local currency, and positive/increasing values indicate appreciation.
Source: ADB calculations using data from Haver Analytics.

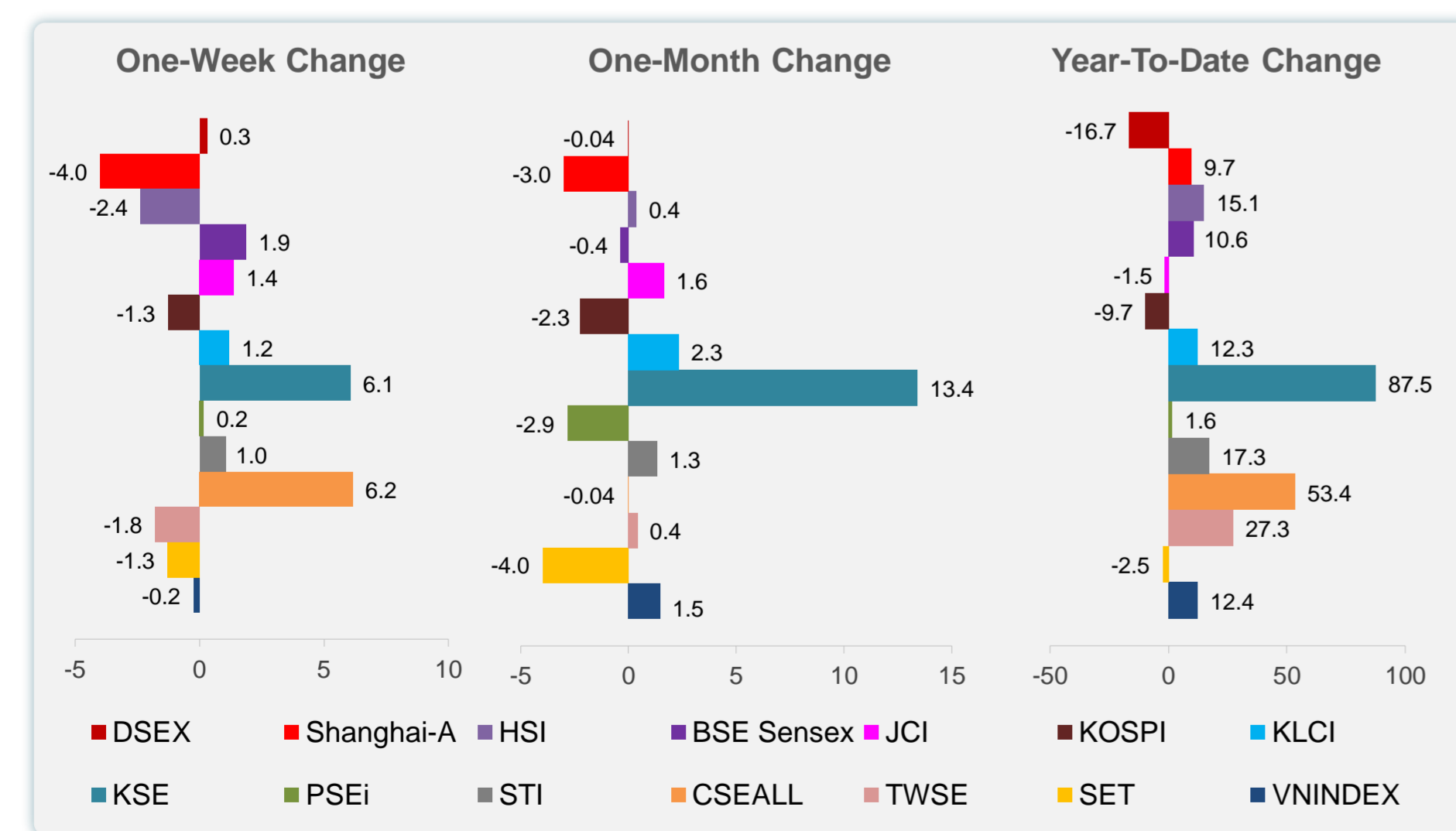
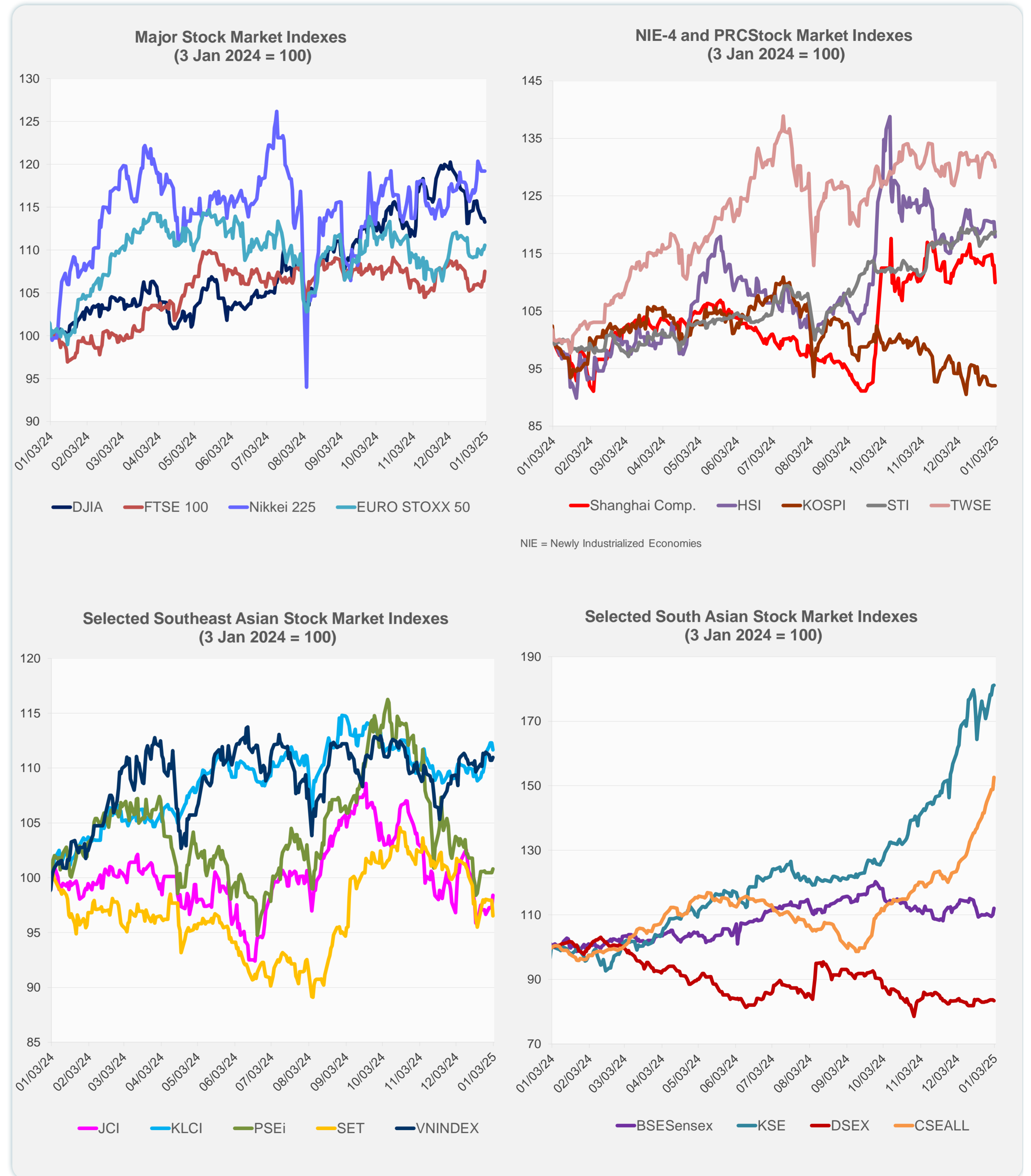


Source: Haver Analytics.

Daily Market Watch
STOCK INDEXES

3 January 2025, 9:00 AM Manila

	Latest Closing	% change from Previous Day	% change from 01-Jan-24
US Dow Jones Ind Avg	42,392.27	-0.36	12.48
US NASDAQ	19,280.79	-0.16	28.44
US S&P 500	5,868.55	-0.22	23.03
UK FTSE 100	8,260.09	1.07	6.81
EURO STOXX 50	4,917.88	0.45	8.77
Japan NIKKEI 225	39,894.54	0.00	19.22
Bangladesh DSEX	5,199.62	-0.36	-16.71
PRC Shanghai Comp.	3,262.56	-2.66	9.67
Hong Kong, China HSI	19,623.32	-2.18	15.11
India BSE Sensex	79,943.71	1.83	10.62
Indonesia JCI	7,163.21	1.18	-1.51
Korea, Rep. of KOSPI	2,398.94	-0.02	-9.65
Malaysia KLCI	1,632.87	-0.58	12.25
Pakistan KSE 100	117,119.65	0.10	87.54
Philippines PSEi	6,550.39	0.33	1.56
Singapore STI	3,800.81	0.35	17.30
Sri Lanka CSEALL	16,348.55	2.53	53.45
Taipei, China TWSE	22,832.06	-0.88	27.33
Thailand SET	1,379.85	-1.45	-2.54
Viet Nam VNINDEX	1,269.71	0.23	12.37



Sources: ADB calculations using data from CEIC Data Company and Haver Analytics.



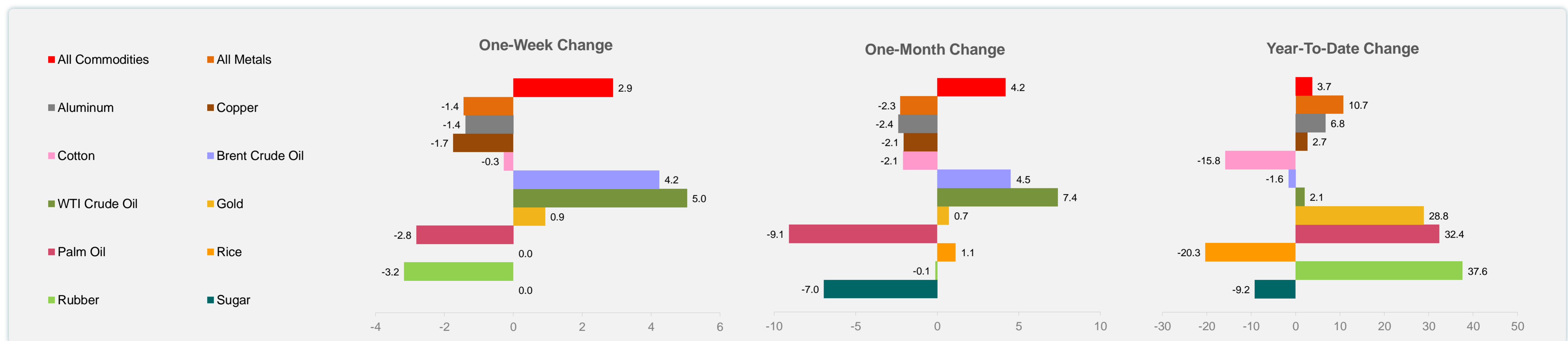
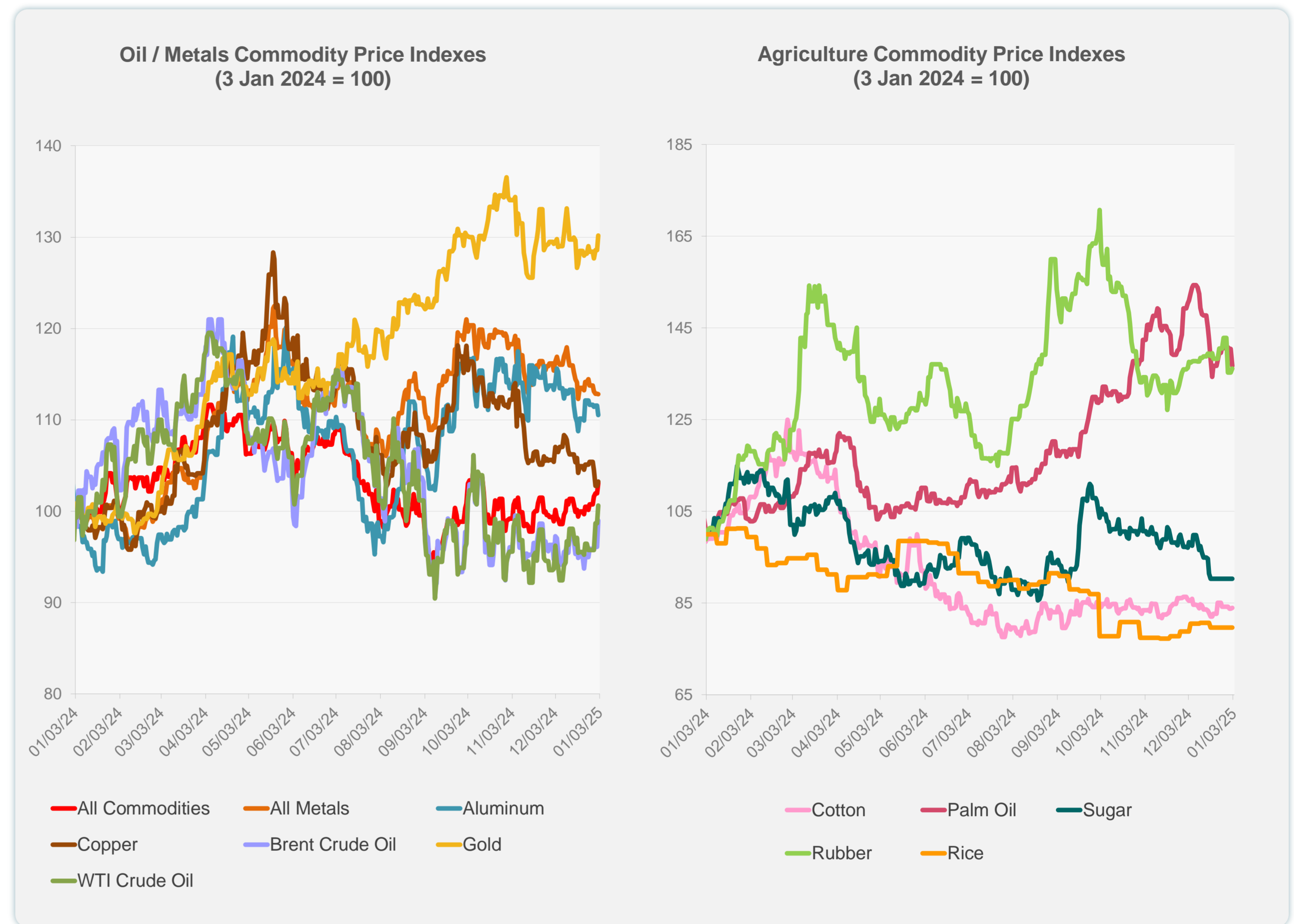
Sources: CEIC Data Company and Haver Analytics.

Daily Market Watch
COMMODITY PRICES

3 January 2025, 9:00 AM Manila

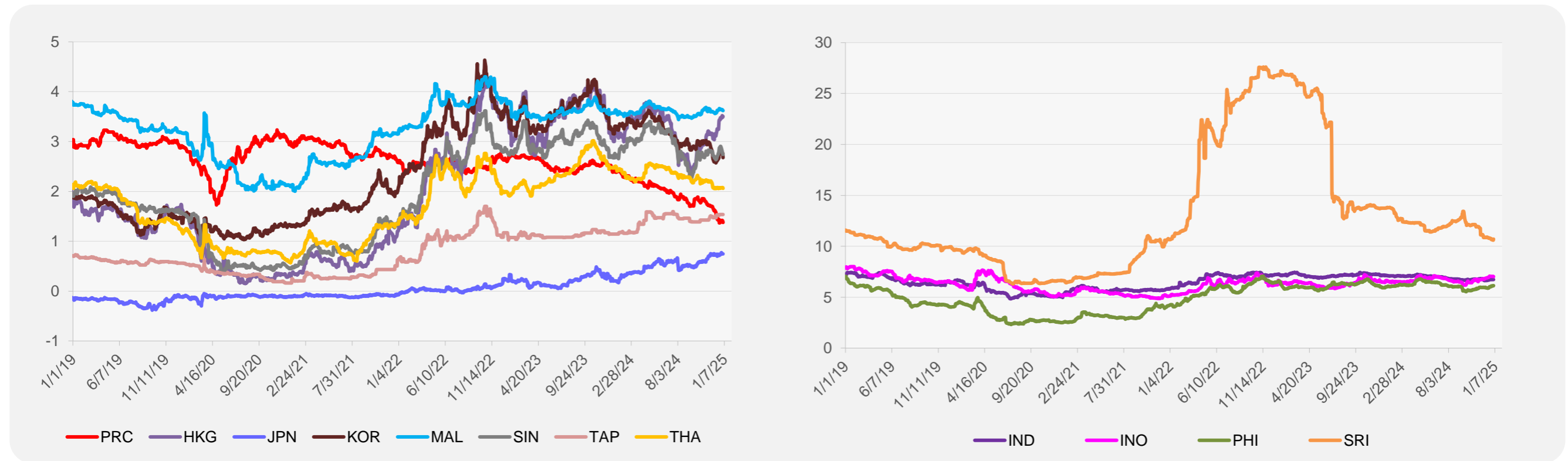
	Unit	Latest Closing	% change from Previous Day	% change from 01-Jan-24
S&P All Commodities	US\$	555.63	1.09	3.73
S&P All Metals	US\$	307.20	-0.06	10.73
Aluminum	US\$/metric ton	2,504.16	-0.90	6.76
Copper	US\$/metric ton	8,691.69	0.45	2.69
Cotton	US cents/lb	66.07	0.26	-15.83
Brent Crude Oil	US\$/barrel	76.35	3.02	-1.62
WTI Crude Oil	US\$/barrel	73.13	1.97	2.07
Gold	US\$/troy oz	2,657.90	1.27	28.84
Palm Oil	US\$/metric tonne	1,070.94	-2.65	32.38
Rice ¹	US\$/metric ton	537.00	0.00	-20.33
Rubber ²	US\$/kg	238.20	0.59	37.61
Sugar	US cents/lb	18.59	0.00	-9.18

¹ Latest closing price from 18 December 2024.
² Singapore Exchange, Ribbed Smoked Sheet Rubber.

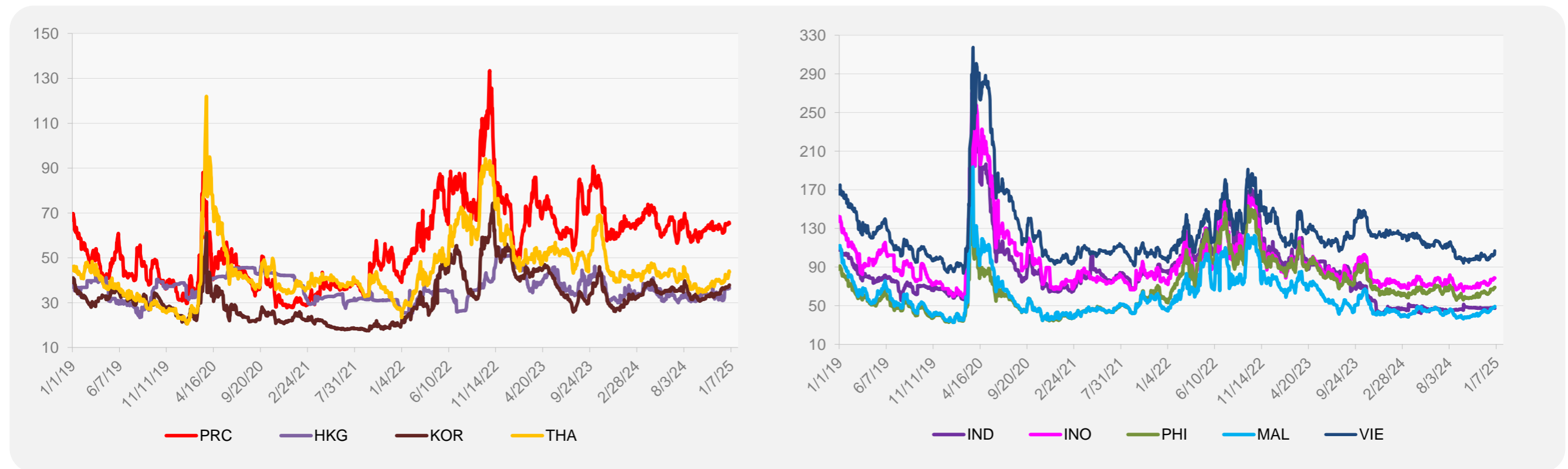


Source: ADB calculations using data from Bloomberg.

5-YEAR LOCAL CURRENCY GOVERNMENT BOND YIELDS (%)



5-YEAR CREDIT DEFAULT SWAP¹



¹ In USD and based on sovereign bonds.
Source: ADB calculations using data from Bloomberg.